

Open up to joy.  
Open up to a life of luxury.

# Lore Pride

Premium Luxury Apartments  
Doddanakundi, Mahadevpura, Bangalore



A PROJECT BY

  
Lore  
Infra



Joy is a warm hug  
Joy is waking up from one dream to another  
Joy is bringing home a surprise  
Joy is a life extraordinaire

Welcome to joy....  
Welcome to a life extraordinaire...



# Lore Pride

Premium Luxury Apartments

Welcome to Lore Pride, a landmark in residential complexes which the denizens of Bangalore will feel proud of. Independent style apartments without common walls, tune to the modern standards with more privacy in day to day living. In magnitude and scale too, it is simply breathtaking, which showcases the best of living spaces (apartments) that everyone looks forward to own and live in? Say hello and welcome the superior luxury living! The benefits are not only encouraging but irresistible. Here it is for you!

Lore Pride is yet another prestigious project from Lore Infra at IT corridor of Bangalore. Each apartment is well ventilated with an abundance of natural light and air. With multinational companies in the vicinity, it puts you in the elite company. Proximity to the essentials like schools, colleges, medical facilities, shopping and entertainment centers make life more convenient. Welcome to another landmark in the IT corridor "Lore Pride" Apartments.







Joy is immersing in warmth.....





Lore  Pride





## Life with Lifestyle....

Lore Pride nestled with an exquisitely luxurious address that has few equals in Bangalore and it's surrounded by beautiful well developed apartments and villas.

Lore Pride offers 50 lavish flats with rich exterior that extrude the quite sense of luxury with varieties of three bedrooms and four bedrooms duplex premium apartments, designed to accommodate your dreams. Every apartment is well designed and well ventilated with plenty of natural light and a scenic view of the soothing surroundings. Get ready to enjoy a rich living experience surrounded by amenities that relax you as nature around. Come explore a new zenith of opulence. Indulge in a life extraordinaire



## Reasons to choose.....

- ❖ Independent enhanced apartment – NO COMMON WALLS
- ❖ Well connected to CBD and recreations – 100 feet and 60 feet connecting roads
- ❖ Stunning modern exterior with Basement + Ground + 6 Floors apartment
- ❖ 50 numbers 3 BHK, 4 BHK and Duplex luxurious units
- ❖ Approved by BBMP with 'A' Khata & CC
- ❖ Spacious Vastu Compliant units without compromising comfort and style
- ❖ Basement Floor floor spacious car parking
- ❖ Landscape and common amenities space
- ❖ Bore well water with provision of corporation water supply
- ❖ High quality elevators with Generator power back up
- ❖ Sensible design with 3 side open apartment meant for more sunlight and fresh air. Approved with all by laws
- ❖ Seismic Zone II considered structure
- ❖ Uncompromised quality construction
- ❖ Team of well qualified professionals behind the project





Lore  Pride

Joy is being one with  
unsurpassed luxury.....

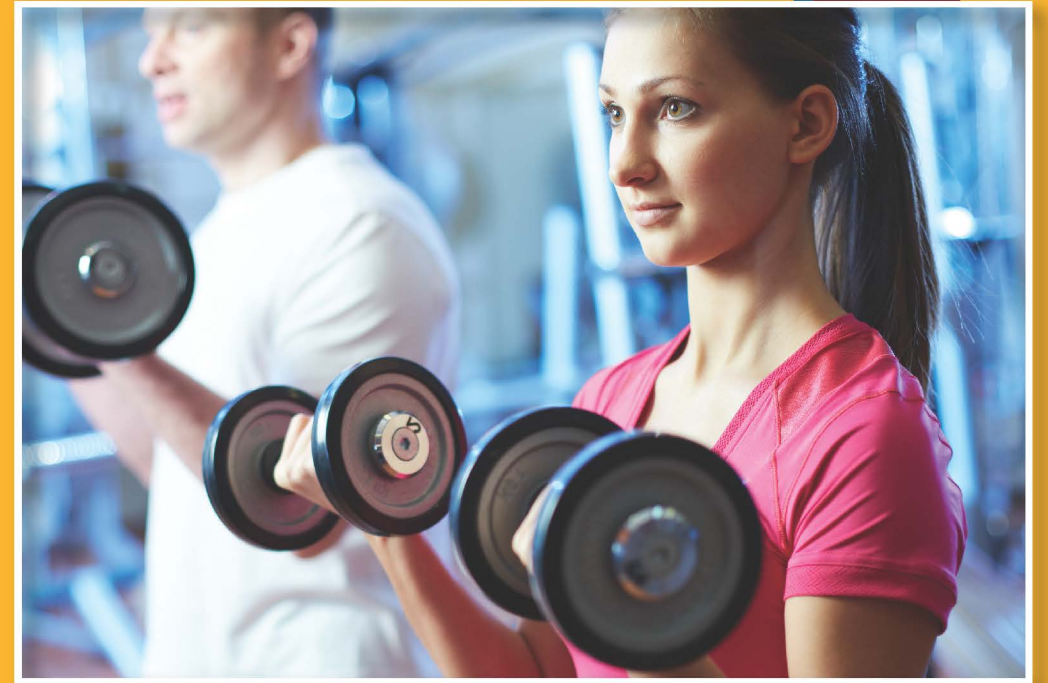




Elegantly designed homes that are guaranteed to charm you at the very first sight. Designed with wide open area in all around gives more nature light, natural ventilation and fresh air. Spacious living and bed rooms with lofty balconies and utility space gives you freedom of day to day life. Granite flooring for common area, superior quality Vitrified tiles for living/dining, Wooden Laminated flooring for master bedroom and beautifully finished walls provide a perfect setting for cosying up with your family and friends. Regale in memories or create new ones, right here!

## A M E N I T I E S

- ❖ Club House / Multi Purpose Hall ❖
- ❖ Gym ❖ Landscape Garden ❖
- ❖ Children's Play Area with Play equipment's ❖
- ❖ Swimming Pool ❖ Toddlers Pool ❖
- ❖ Visitor's Car Parking ❖
- ❖ Reception Lobby at two places ❖
- ❖ Separate Entrance & Exit Gate ❖
- ❖ 24/7 Security with CCTV Camera ❖









# Lore Pride

Premium Luxury Apartments

## LEGENDS

- 1 Main Entrance - Entry & Exit
- 2 Children's Play Area
- 3 Parking Entry
- 4 Swimming Pool
- 5 Toddlers Pool
- 6 Drive Way
- 7 Gym and Club House
- 8 Landscape Garden
- 9 Visitors Parking
- 10 Pool Deck
- 11 Entrance to Apts
- 12 Reception Lobby



MASTER PLAN



# GROUND FLOOR PLAN

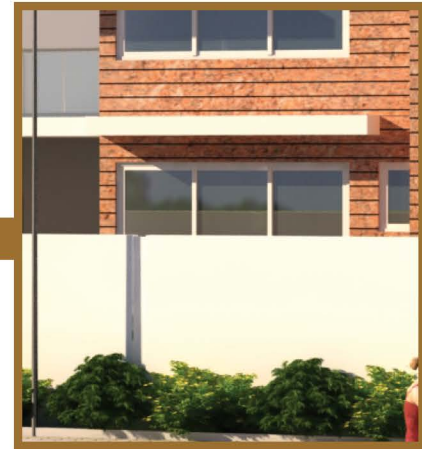






## AREA STATEMENT

FLAT NOS.	TYPE	SBA	FACING
01	3BHK	2165 Sft.	East
02	3BHK	2199 Sft.	West
03	3BHK	1983 Sft.	East
04	3BHK	1993 Sft.	West
05	3BHK	1991 Sft.	East
06	3BHK	2057 Sft.	West



## ISOMETRIC VIEWS

3 BHK

AREA: 2165 Sq.ft.



3 BHK

AREA: 1991 Sq.ft.

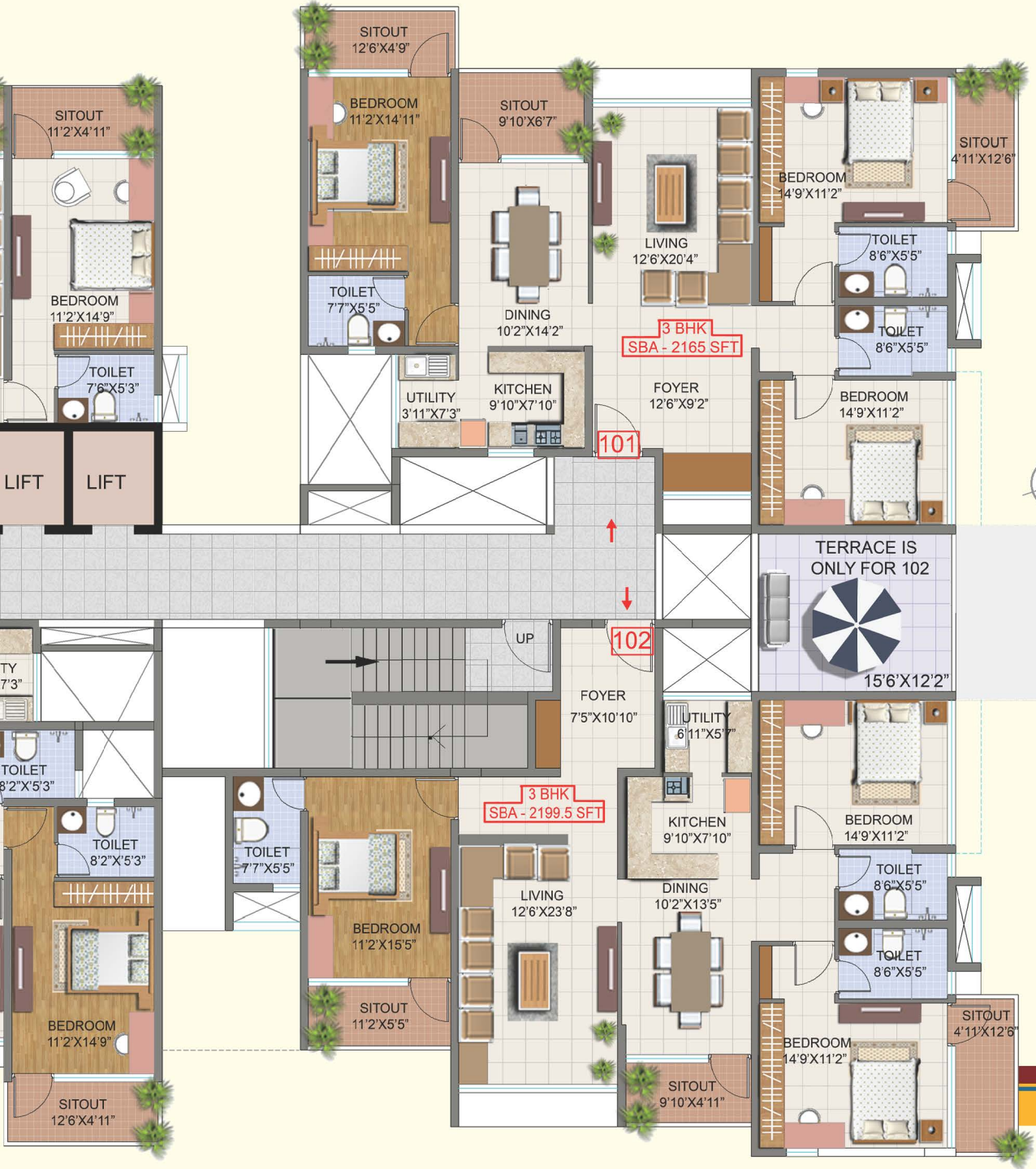




# TYPICAL FLOOR PLAN







## AREA STATEMENT

FLAT NOS.	TYPE	SBA	FACING
101	3BHK	2165 Sft.	East
102	3BHK	2199 Sft.	West
103	3BHK	1983 Sft.	East
104	3BHK	1993 Sft.	West
105	3BHK	1991 Sft.	East
106	3BHK	2057 Sft.	West
107	3BHK	2218 Sft.	East
108	3BHK	2229 Sft.	West



## ISOMETRIC VIEWS





# FIFTH FLOOR PLAN





# AREA STATEMENT



FLAT NOS.	TYPE	SBA	FACING
501	4BHK	3497 Sft.	East (Duplex- Lower Level)
502	4BHK	3682 Sft.	West (Duplex- Lower Level)
503	3BHK	1983 Sft.	East
504	3BHK	1993 Sft.	West
505	3BHK	1991 Sft.	East
506	3BHK	2057 Sft.	West
507	4BHK	3638 Sft.	East (Duplex- Lower Level)
508	4BHK	3540 Sft.	West (Duplex- Lower Level)



# ISOMETRIC VIEWS

3 BHK Duplex Lower Level AREA: 3497 Sq.ft.



3 BHK AREA: 1983 Sq.ft.





# SIXTH FLOOR PLAN (DUPLICATE)





# AREA STATEMENT



FLAT NOS.	TYPE	SBA	FACING
501			(Duplex- Upper Level)
502			(Duplex- Upper Level)
603	3BHK	1983 Sft.	East
604	3BHK	1993 Sft.	West
605	3BHK	1991 Sft.	East
606	3BHK	2057 Sft.	West
607			(Duplex- Upper Level)
608			(Duplex- Lower Level)



# ISOMETRIC VIEWS

1 BHK Duplex Upper Level



3 BHK

AREA: 1983 Sq.ft.







## SPECIFICATIONS..... Joy is beauty in details.....

### STRUCTURE

- RCC frame designed as per relevant codes

### WALLS

- External walls 200mm / 150mm solid block
- Internal walls 100mm / 200v mm solid / hollow block

### PLASTERING

- External 2 coats, sponge finish
- Internal single coat lime rendering to receive paint

### FLOORING

- Granite marble - Corridors / lobbies, clubhouse etc
- Laminated wood grained flooring - Master bedroom
- Vitrified tiles - All other areas except toilets

### TOILETS

- Anti skid ceramics Tiles flooring and dadoing upto 2.10 metre height

### SANITARY & PLUMBING

- All toilets fitted with CP fitting of Jaquar make or equivalent
- Hot & cold water mixer with shower of good standard make
- Provision for geysers in all toilets
- CPVC concealed pipes
- All WC's wash basins etc are premium quality Indian make or equivalent

### KITCHEN

- Granite platform with stainless steel sink with both bore well water connection, provision for aqua guard, glazed tiles dadoing up to 600mm
- Hot and cold water connections
- Provision for Aqua guard

### UTILITY AREA

- Anti skid ceramic tiles flooring and 800mm high skirting and necessary water connection

### PAINTING

- Internal smooth finish with Altek or equivalent coat and 2 coats of plastic emulsion of make ICI / Berger
- Exterior paint / exterior paint for entire building

### ELECTRICAL

- Concealed copper wiring of Finolex / Havels and power points for AC, geysers in all bedrooms. Power plug for refrigerator in kitchen and washing utility area. Adequate power points with modular switches in kitchen with miniature circuit breakers (MCB) of standard make distribution board

### TELECOM

- Telephone points in all bedrooms and living room

### TELEVISION

- Provision for cable TV in all bedrooms and living room

### INTERNET

- One internet provision in each bedroom

### DOORS & WINDOWS

- Main door: Teak wood frame, par finished with melamine polish with good quality hardware
- Doors: Teak wood frame and flush door shutters one side and fixed with good quality hardware
- Windows: Wood / UPVC with float glass. Frame with plain float glass panels. UPVC with glass panels
- Grills for ground floor apartments



# Joy is in being at the centre of the World....

## Walk-to-Work. Walk-to-Shop.

Lore Pride is not only close to nature but also nearer to the city lights and work place. Located at corporate high street of signal free Outer Ring Road, it is a delight for all those who look beyond the realms of normal living. Be it IT and ITEs MNC companies or other offices, are rooted in close proximity. All amenities of an urban life In a close vicinity.

## Proximity.

- ❖ Beside Bagmane Technology Park and E2H
- ❖ 10 minutes' drive to ITPL
- ❖ 10 minutes drive to K R Puram Railway Station
- ❖ In 5 Kms radius Leading IT companies IT Parks are located – Prestige Tech Park, Cesna Tech Park, Vrinda Tech Park, ECOSPACE Dell International, HCL, TCS etc.,
- ❖ In proximity of 5 Kms several International and Public Schools and colleges are lodged.
- ❖ In proximity of 5 Kms several leisure and entertainment centers are situated – Total Mall, Forum Value Mall, City Center, Phienex Mall, Big Bazar etc.
- ❖ 10 minutes drive to several world class health centers – Sai Baba Multi Specialty Hospital, Fortis Hospital, Manipal Hospital
- ❖ Old Madras road, Marathahalli Junction is just 5 minutes drive



EMC<sup>2</sup>



Bagmane Teck Park



Total Mall



More Super Market



## JOY IS BUILDING DREAMS

Passionately building dreams into reality.....

As a prominent real estate company, Lore Infra has marked its presence in premium urban scapes and has rooted itself as one of the leading real estate companies in Bangalore. With successful executed projects like Lore Aswasid Towers. It has maintained high standards by striking a balance between quality and finesse. Lore Infra is committed to explore new areas and dimensions in infrastructure development, striving to touch newer heights.





## LOCATION MAP (NOT TO SCALE)



## SITE ADDRESS

**Lore Pride**

Sy. No: 24/1, Site No: 3034,  
Ferns city Road,  
Doddanakundi,  
Bangalore -560 037

**DISCLAIMER:** This brochure is purely conceptual and is not a legal offering. The promoters/architects reserve the right to add/delete/alter any detail/specification/elevation mentioned herein.

## PROMOTERS



A Symbol Of Traditions

**M/s. LORE INFRA,**  
#502B, B- Block, 5th Floor,  
Flushing Meadows Apartments,  
Opp. Ferns City,  
Doddanakundi, Bangalore -560 037.  
**Tel.: 080 42103036**  
**Mob. : 9686450460, 97422 64484**  
Email: info@loreinfra.com  
**www.loreinfra.com**

## ARCHITECTS

**Virendra Kumar Girdhar**  
Consulting Architect  
#19, 1st Floor, 3rd Cross, Victoria Layout,  
Bangalore – 560 047.  
Phone: 25572567 / 568  
Mobile: 9845720891

## STRUCTURAL ENGINEERS

**Mr. Manjunath**  
#34, Shankar Mutt Road,  
Basavanagudi, Bangalore – 560 004.  
Phone: 2660 9551  
Mobile: 98440 61656